



WHERE TECHNOLOGY MOVES WITH TIME
25
YEARS
EXPIERIENCE

HIMALAYA ENGINEERING COMPANY

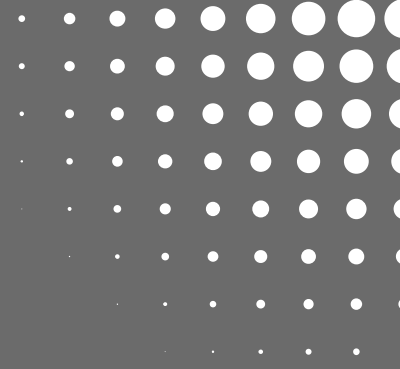
MANUFACTURER OF ROAD CONSTRUCTION
&
CIVIL CONSTRUCTION EQUIPMENTS



WHERE TECHNOLOGY MOVES WITH TIME



INTRODUCTION



At Himalaya Engineering Company, we proudly manufacture and export a wide range of road construction machinery. Known for our commitment to quality and innovation, our equipment is designed to perform efficiently across diverse site conditions while delivering higher output, lower operational costs, and maximum uptime.

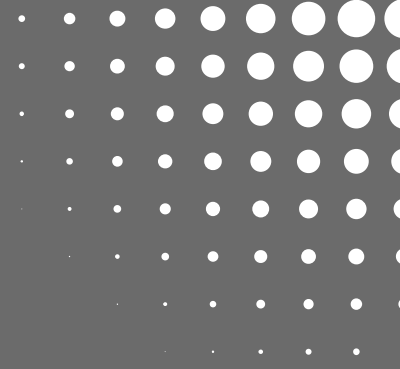
With a strong focus on Total Quality Management, we strive to exceed industry standards at every stage of production. Our mission is to contribute to the nation's economic progress by supporting the development of efficient and industrialized zones through robust, high-performance machinery



WHERE TECHNOLOGY MOVES WITH TIME



OUR STORY



Himalaya Engineering Corporation was founded with a clear mission: to deliver reliable, high-performance road construction machinery that supports infrastructure development across the globe.

Starting from modest roots, we've grown into a trusted name in the industry, backed by years of technical expertise, innovation, and a commitment to quality. Our journey has been driven by the belief that durable, efficient equipment can power progress and help build a better future.

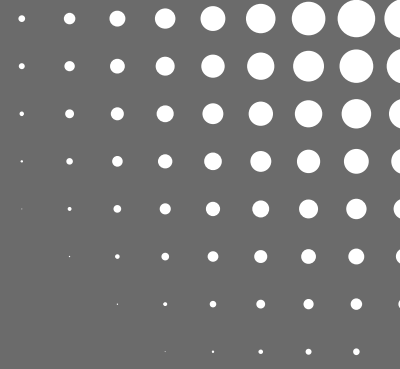
Today, we continue to expand our reach, serve clients worldwide, and uphold the values that started it all—excellence, trust, and performance.



WHERE TECHNOLOGY MOVES WITH TIME



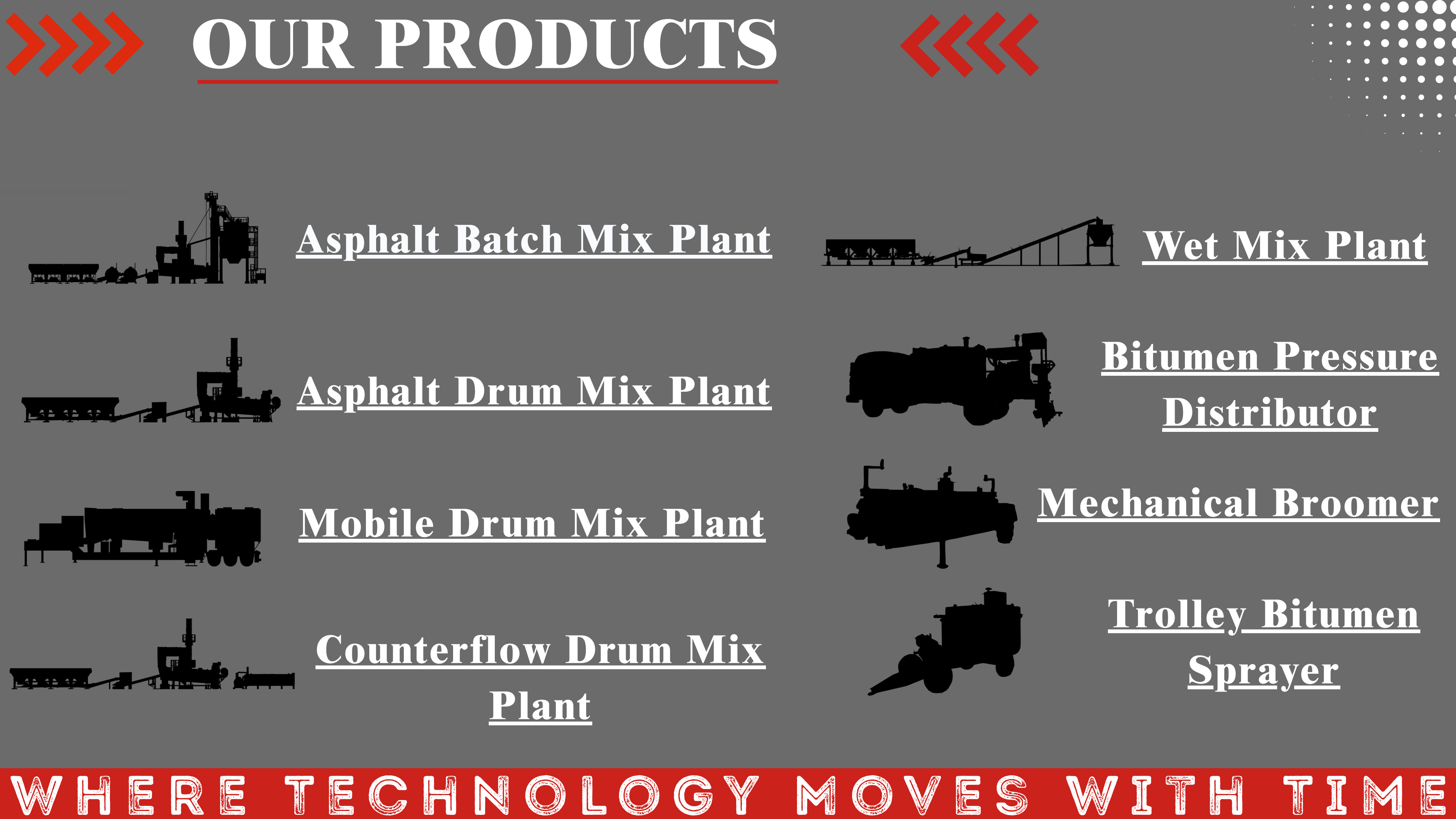
OUR MISSION



- To deliver reliable, high-performance.
- To ensure quality, efficiency, and innovation.
- To ensure top-quality, efficiency, and innovation.
- To build strong, lasting client relationships.
- To continuously improve and innovate.



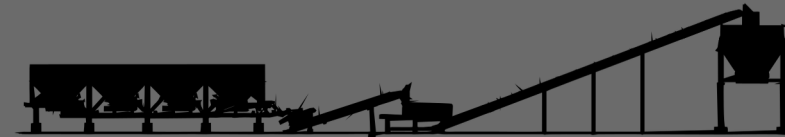
WHERE TECHNOLOGY MOVES WITH TIME



OUR PRODUCTS



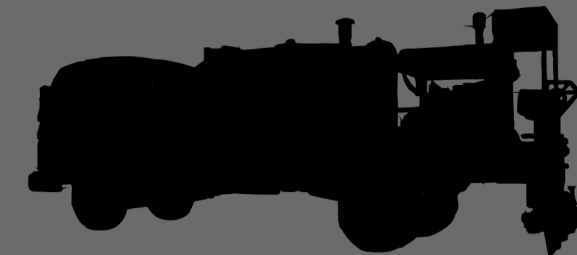
Asphalt Batch Mix Plant



Wet Mix Plant



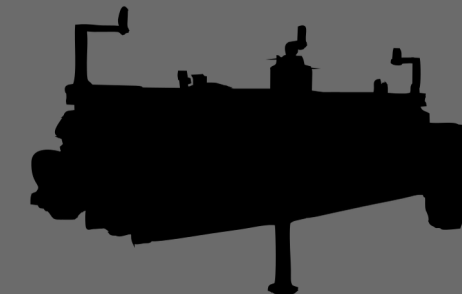
Asphalt Drum Mix Plant



Bitumen Pressure
Distributor



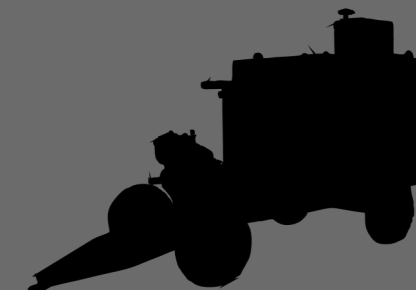
Mobile Drum Mix Plant



Mechanical Broomer



Counterflow Drum Mix
Plant



Trolley Bitumen
Sprayer

WHERE TECHNOLOGY MOVES WITH TIME



OUR PRODUCTS



Asphalt Paver Finisher



Asphalt Bitumen
Storage Tank



Stationary Concrete Pump



Concrete Batching Plant

WHERE TECHNOLOGY MOVES WITH TIME



ASPHALT BATCH MIX PLANT



HBM SERIES 80-240 TPH



"HIMALAYA" asphalt batch plants are specifically acclimatised to India's normal aggregate conditions, input dust levels, moisture content in stones, average environmental standards, fuel availability and production variables. Therefore, our customers have absolutely no bad surprises.

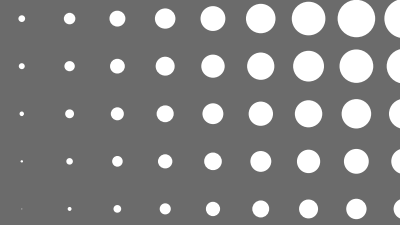
Our plants reflect one of the most exhaustive plant systems available in the market. Standards configuration of our systems are perfectly matched to the capacity, production demands and site requirements for each model.

"HIMALAYA" -Batch mix asphalt plant is the most widespread type of asphalt plant in the world and their popularity lies in the fact that they guarantee top quality and maximum flexibility.

WHERE TECHNOLOGY MOVES WITH TIME



Asphalt Drum Mix Plant



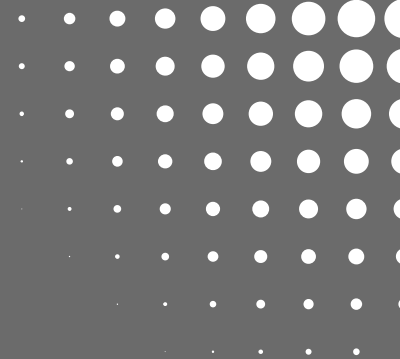
We manufacture advanced drum mix plants with automatic controls that meet M.O.R.T.H. specifications. The HIMALAYA thermo drum features innovative flight design and heat transfer technology (conductive, convective, and radiative) for efficient heat transfer, thorough mixing, and reduced emissions. This plant produces high-quality hot asphalt mixtures with minimal wear and low maintenance. Its portability, with a single unit containing the drum mixer, dust collector, and conveyor, makes it suitable for both small and large projects.



WHERE TECHNOLOGY MEETS WISDOM



MOBILE DRUM MIX PLANT



The Himalaya Mobile Drum Mix Plant is designed for fast setup, easy relocation, and efficient asphalt production. Mounted on a single chassis, it combines drying, mixing, and control systems for consistent performance. Ideal for remote and short-term projects, it ensures uniform mixing, low maintenance, and reliable output with minimal setup time.

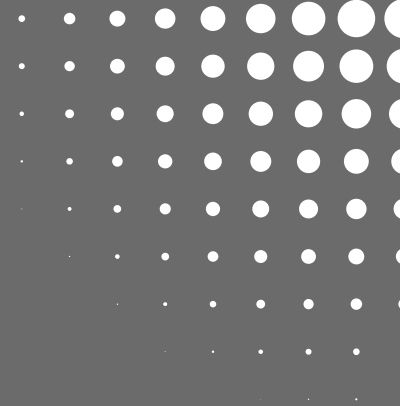
Key Features:

- Single chassis, fully mobile design
- Efficient drying and mixing drum
- Quick installation and easy transport
- Advanced control system for accuracy
- Available in multiple capacities



WHERE TECHNOLOGY MOVES WITH TIME

CounterFlow Drum Mix Plant

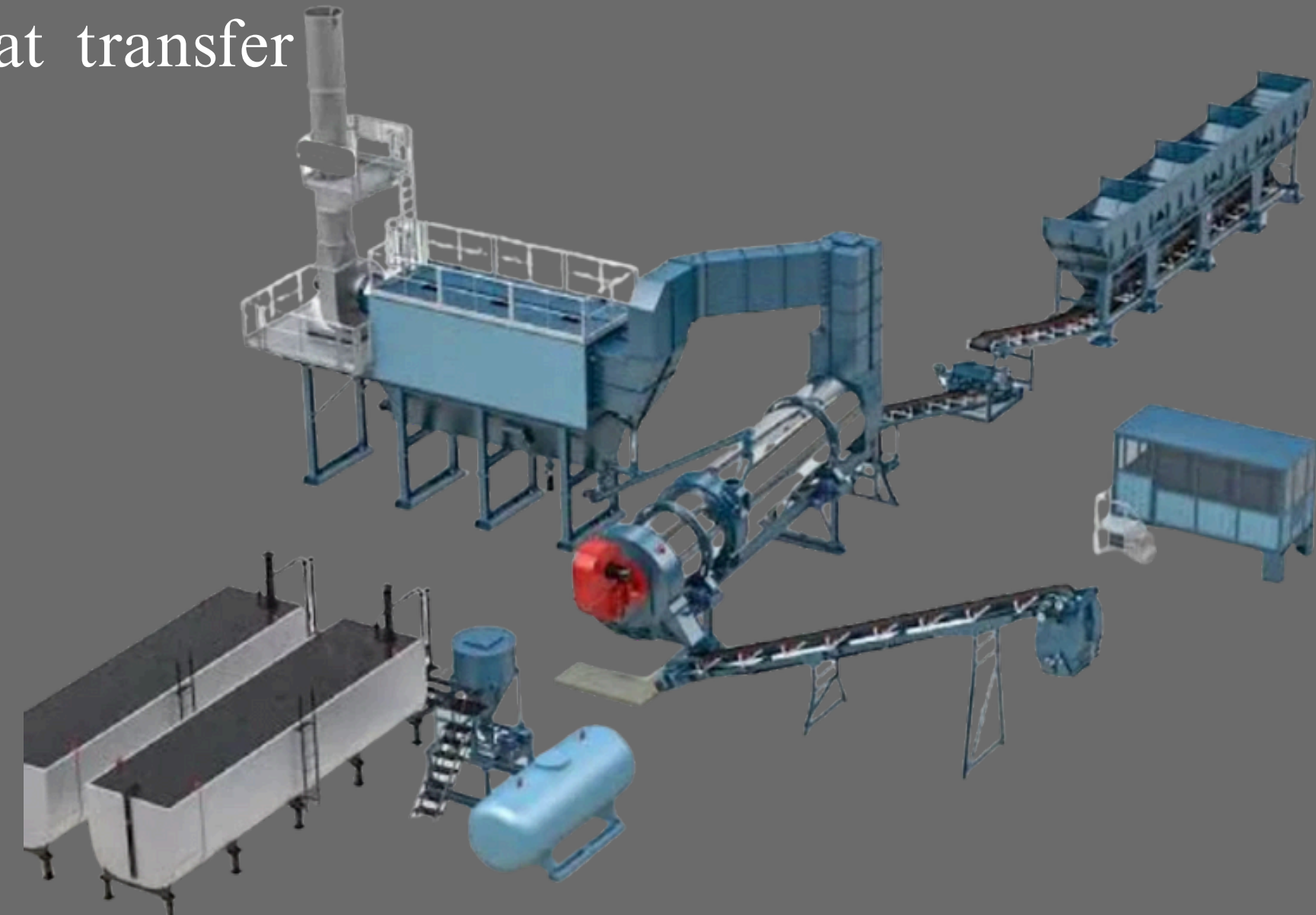


Efficient. Eco-Friendly. Engineered for Excellence.

Himalaya Engineering Company's Counter Flow Drum Mix Plant is designed for superior mixing efficiency, minimal emissions, and long-lasting performance. Unlike parallel flow systems, our counter flow technology ensures precise drying and thorough mixing of aggregates and bitumen in opposite directions, maximizing heat transfer and minimizing pollution.

Key Features:

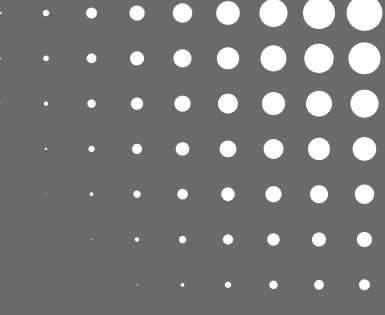
- **High Fuel Efficiency**
- **Low Emission Design**
- **Counter Flow Technology**
- **Modular Structure**
- **Robust Build**
- **User-Friendly Control Panel**



WHERE TECHNOLOGY MOVES WITH TIME



Wet Mix Plant



A wet mix plant, also known as a wet mix macadam plant, is a piece of equipment used in the construction of roads and highways. It is designed to produce a homogenous mixture of aggregates, sand, cement, and water to create a base or sub-base layer that provides stability and support for the

pavement above. The wet mix plant ensures precise control over the mixing process, resulting in a high-quality blend that meets specific project requirements. Key features include a twin-shaft mixer, water tank, and conveyor system for efficient material handling. Wet mix plants are essential for large-scale infrastructure projects where consistent, durable road surfaces are critical. Their use enhances construction efficiency, reduces manual labor, and ensures longevity and strength of the constructed roads.



WHERE TECHNOLOGY MOVES WITH TIME



▶▶▶▶▶ BITUMEN PRESSURE DISTRIBUTION ◀◀◀◀◀

A bitumen sprayer is essential equipment in road construction and maintenance, used to apply an even layer of bitumen — a sticky, highly viscous petroleum product — onto surfaces. It acts as a binding agent, holding aggregates together in asphalt paving. The sprayer features a storage tank, a heating system to maintain the correct temperature, and a precise spraying mechanism for uniform coverage. By ensuring proper adhesion and waterproofing, bitumen sprayers help create durable, long-lasting road surfaces while minimizing material waste and enhancing finish quality.

WHERE TECHNOLOGY MOVES WITH TIME



MECHANICAL BROOMER



A mechanical broomer, often referred to as a street sweeper, is a machine used to clean streets, roads, and other paved surfaces. It is designed to efficiently remove debris, dirt, and litter through a combination of rotating brushes and powerful suction. These machines are typically employed by municipalities and private contractors to maintain cleanliness in urban and suburban areas.



Mechanical broomers are effective in reducing pollution, preventing stormwater drain blockages, and enhancing the aesthetic appeal of public spaces. By keeping streets clean, they also contribute to public safety by reducing hazards like slick patches or debris that could cause accidents.

WHERE TECHNOLOGY MOVES WITH TIME

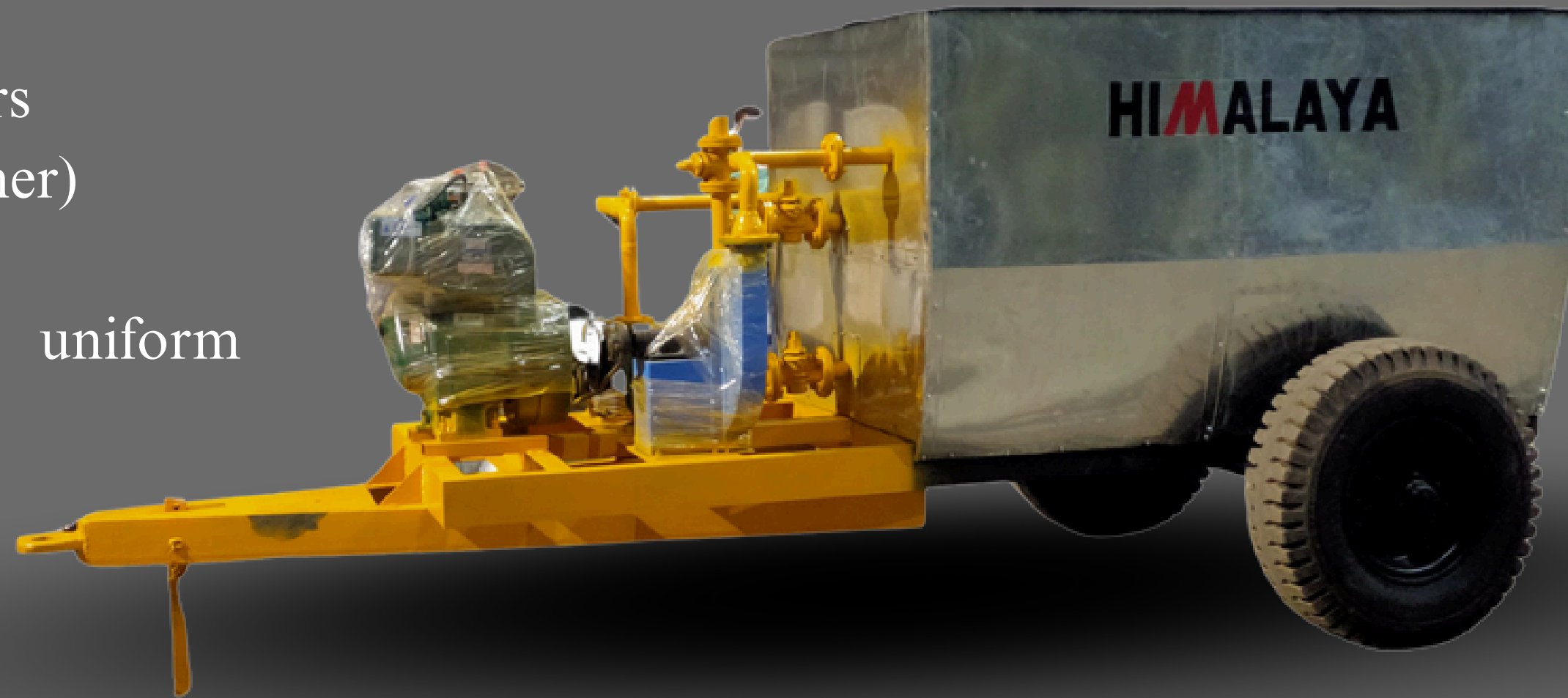
▶▶▶▶ BITUMEN TROLLEY SPRAYER ◀◀◀◀

Compact. Reliable. Efficient.

Himalaya Engineering Company offers a robust and portable Bitumen Trolley Sprayer, ideal for small-scale bituminous applications such as patchwork, edge sealing, and tack coat spraying. Designed for easy mobility and quick deployment, this unit ensures uniform and controlled spraying of hot bitumen, enhancing the quality and efficiency of road maintenance operations.

✓ Key Highlights:

- Tank capacity options from 500 to 1000 liters
- Efficient heating system (diesel or LPG burner)
- Insulated tank with temperature control
- Spray lance with precision nozzle for uniform coverage
- Heavy-duty frame with pneumatic wheels for easy movement



WHERE TECHNOLOGY MOVES WITH TIME

Asphalt Paver Finisher

Precision. Performance. Reliability.

Introducing the Asphalt Paver Finisher from Himalaya—your key to precise and efficient road construction. Our machinery expertly lays asphalt on various surfaces, ensuring smooth and durable finishes. Equipped with advanced components like a high-capacity hopper and cutting-edge screed, it enhances safety while reducing time and costs. Experience the future of paving with Himalaya

Asphalt Paver Finisher (Mechanical) HRM-6

Asphalt Paver Finisher (Hydraulic) HRM-8

Asphalt Paver Finisher (Mechanical) HWM-6

Asphalt Paver Finisher (Hydraulic) HWM-8



WHERE TECHNOLOGY MOVES WITH TIME

▶▶▶▶ ASPHALT BITUMEN TANK <<<<

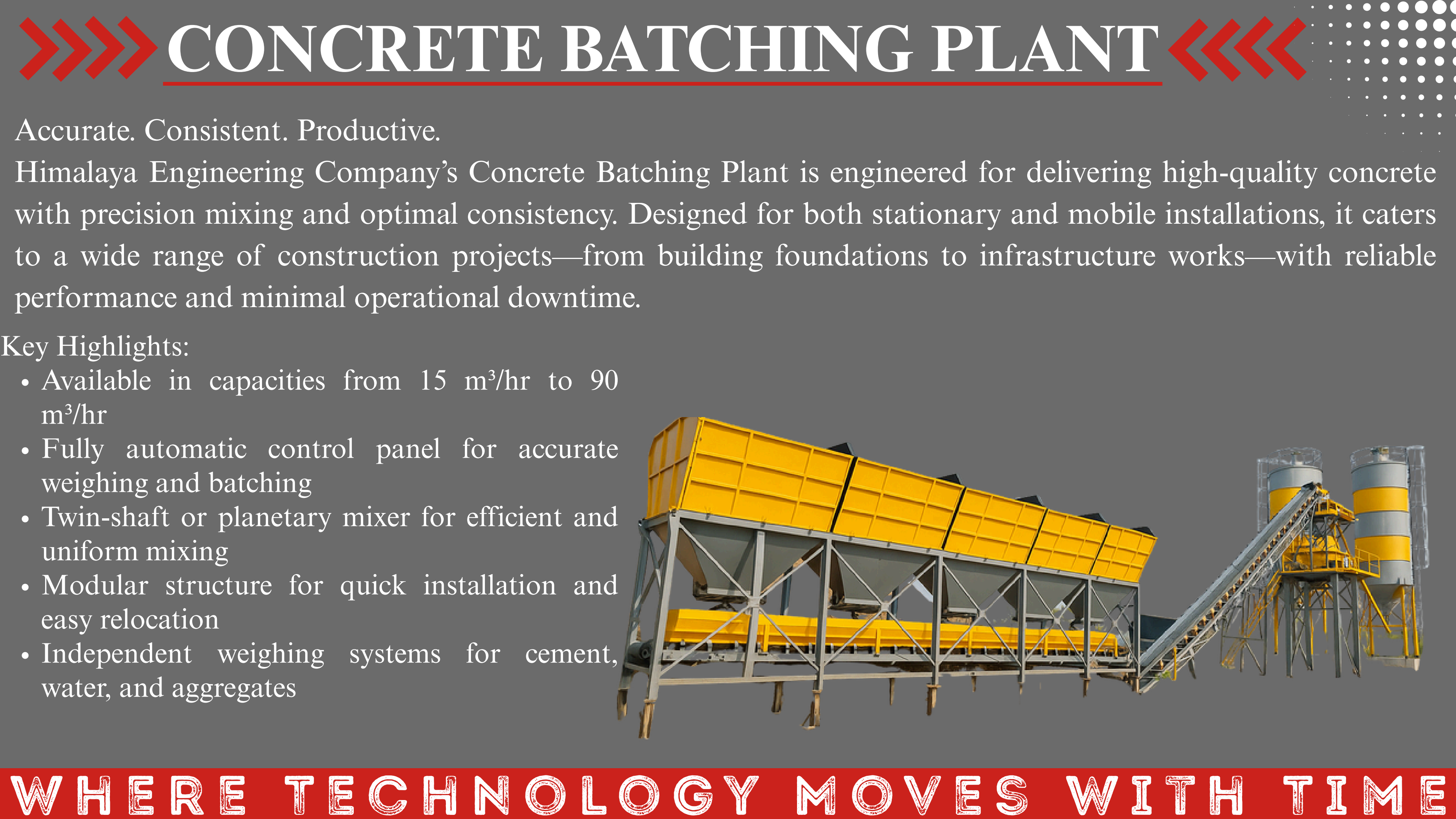
The Himalaya Bitumen Tank is designed for efficient storage and heating of bitumen, essential for road construction projects. Built with heavy-duty, insulated materials, it ensures minimal heat loss and maintains consistent bitumen quality. Equipped with advanced heating systems (direct or indirect) and easy-to-operate controls, it provides safe, efficient, and reliable performance. Available in various sizes, our bitumen tanks are ideal for both stationary and mobile applications.

Key Features:

- High-grade insulation for heat efficiency
- Direct or thermic fluid heating options
- Easy discharge and temperature control
- Durable construction with low maintenance needs



WHERE TECHNOLOGY MOVES WITH TIME



CONCRETE BATCHING PLANT

Accurate. Consistent. Productive.

Himalaya Engineering Company's Concrete Batching Plant is engineered for delivering high-quality concrete with precision mixing and optimal consistency. Designed for both stationary and mobile installations, it caters to a wide range of construction projects—from building foundations to infrastructure works—with reliable performance and minimal operational downtime.

Key Highlights:

- Available in capacities from 15 m³/hr to 90 m³/hr
- Fully automatic control panel for accurate weighing and batching
- Twin-shaft or planetary mixer for efficient and uniform mixing
- Modular structure for quick installation and easy relocation
- Independent weighing systems for cement, water, and aggregates

WHERE TECHNOLOGY MOVES WITH TIME



CUSTOMIZATION AVAILABLE



We understand that every project has unique requirements. That's why we offer customisation options on all our asphalt plants and equipment. Whether you need specific capacities, control systems, mobility features, or layout adjustments, our engineering team will work with you to deliver a solution tailored to your needs.

Customised layouts

- Control system integration
- Capacity modifications
- Specialized components and features
- Contact us to discuss your customization needs.

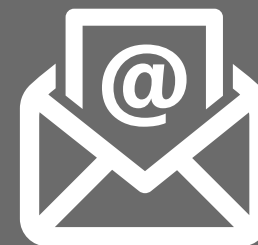
WHERE TECHNOLOGY MOVES WITH TIME



CONTACT US



+91 9825022874 (Sales)
+91 9909022874 (Design and Technical)
+91 9909022875 (Production)



HIMALAYARAMESH@YAHOO.COM
HIMALAYAAMRUT@YAHOO.COM
HIMALAYAHITESH@YAHOO.COM



PLOT NO. 38 DEDIYASAN GIDC PHASE 2
DEDIYASAN MEHASANA 384002
GUJARAT, INDIA.



WWW.HIMALAYAEQUIPMENT.COM
WWW.HIMALAYAENGINEERING.IN



WHERE TECHNOLOGY MOVES WITH TIME



THANK YOU

HIMALAYA.RAJPAL@GMAIL.COM



WHERE TECHNOLOGY MOVES WITH TIME