



30

YEARS OF EXPERIENCE

Our Product Range:

- Asphalt Batch Mix Plant
- Asphalt Drum Mix Plant
- Wet Mix Macadam (WMM) Plant
- Ready Mix Concrete (RMC) Plant

- Bitumen Pressure Distributor
- Bitumen Trolley Sprayer
- Paver Finisher
- Hydraulic/Mechanical Broomer
- Bitumen Drum Decanter

ASPHALT BATCH MIX PLANT

The Asphalt Batch Mix Plant is a high-precision road construction solution designed to produce superior quality hot mix asphalt in controlled batches. It ensures accurate proportioning of aggregates, filler, bitumen, and recycled materials, delivering consistent and high-performance output for highways, expressways, and infrastructure projects.

At Himalaya Engineering Company, our plants are engineered with advanced technology, robust construction, and intelligent automation to provide reliable, efficient, and eco-friendly operations across all working conditions.

Key Features & Benefits:

- High Accuracy Mixing : Uniform and premium quality output every cycle
- Advanced PLC Automation : Smart and user-friendly control system
- RAP Integration Ready : Supports recycled asphalt usage for cost savings
- Fuel Efficient Burner : Reduced operational costs
- Heavy-Duty Structure : Built for long life and rugged performance
- Low Maintenance Design : Easy servicing and minimal downtime
- Eco-Friendly Operation : Efficient pollution control system
- Customizable Configuration : Designed as per project requirements
- High Production Efficiency : Ideal for large infrastructure projects

RAP System (Recycled Asphalt Pavement)

Our plant can be equipped with an advanced RAP system to reuse milled asphalt material efficiently.



Capacity Options:

80 TPH | 120 TPH | 160 TPH | 200 TPH

- Reduces raw material costs significantly
- Promotes sustainable road construction
- Maintains consistent mix quality
- Available in multiple capacity configurations
- Models / Types Available
- Stationary Type – Best for long-term, high-capacity production
- Mobile Type – Quick installation and easy relocation

Optional Add-ons:

- RAP System
- Fiber Feeding System
- Hot Mix Storage Silo
- Bitumen Storage & Heating Tanks

ASPHALT DRUM MIX PLANT

The Drum Mix Plant is a continuous-type asphalt mixing solution designed for high-efficiency production of hot mix asphalt. Unlike batch-type plants, it ensures uninterrupted mixing, making it highly suitable for large-scale road construction projects requiring consistent output.

At Himalaya Engineering Company, our Drum Mix Plants are engineered for durability, fuel efficiency, and smooth operation, delivering dependable performance across diverse site conditions.

Models & Configurations



Stationary Drum Mix Plant



Portable / Mobile Drum Mix Plant



Counterflow Drum Mix Plant



Drum Mix Plant with RAP System

Key Features & Advantages:

- Continuous mixing process for higher productivity
- Fuel-efficient drying and mixing system
- Heavy-duty drum design for long operational life
- Uniform and consistent asphalt output
- User-friendly control system for smooth operation
- Low maintenance with easy accessibility
- Optimized design for reduced operational costs
- Quick installation and easy relocation (for mobile variants)

Capacity Range:

40 TPH | 60 TPH | 90 TPH | 120 TPH | 150 TPH

Optional Features:

- Wet Dust Collector / Baghouse Filter
- Bitumen Storage Tanks
- Control Panel (Manual / Automatic)
- Multi-bin Cold Aggregate Feeder



WET MIX MACADAM (WMM) PLANT

The Wet Mix Macadam (WMM) Plant is a high-performance mixing solution designed for producing uniform and high-quality wet mix material used as a base and sub-base layer in road construction. It ensures accurate proportioning of aggregates, water, and additives, resulting in a consistent and durable mix.

Key Features & Advantages:

- Uniform and homogeneous mixing for superior road base quality
- Continuous mixing process for high productivity
- Heavy-duty pugmill mixer for efficient blending
- Accurate water dosing system for optimal moisture control
- Robust and durable structure for long service life
- Easy operation with user-friendly control panel
- Low maintenance and operational cost



Capacity Range:

100 TPH | 120 TPH | 160 TPH | 200 TPH | 250 TPH | 300 TPH

READY MIX CONCRETE (RMC) PLANT

The Ready Mix Concrete (RMC) Plant is an advanced batching system designed to produce high-quality concrete with precise proportioning of cement, aggregates, water, and admixtures. It ensures consistent strength, durability, and workability, making it ideal for modern construction needs.

Key Features & Advantages:

- Accurate batching for consistent concrete quality
- Fully automatic control system for precision operation
- Heavy-duty mixer for uniform and efficient mixing
- High production efficiency with reliable output
- Low maintenance and easy operation
- Durable construction for long service life
- Flexible design to suit different project requirements
- Fast installation and smooth operation



Capacity Range:

20 m³/hr | 30 m³/hr | 36 m³/hr | 45 m³/hr | 60 m³/hr | 75 m³/hr | 90 m³/hr | 120 m³/hr

• PAVER FINISHER • BROOMER • BITUMEN DRUM DECANter

■ PAVER FINISHER (ASPHALT + WMM)



A Paver Finisher is essential for laying asphalt uniformly on road surfaces, ensuring a smooth finish and proper compaction.

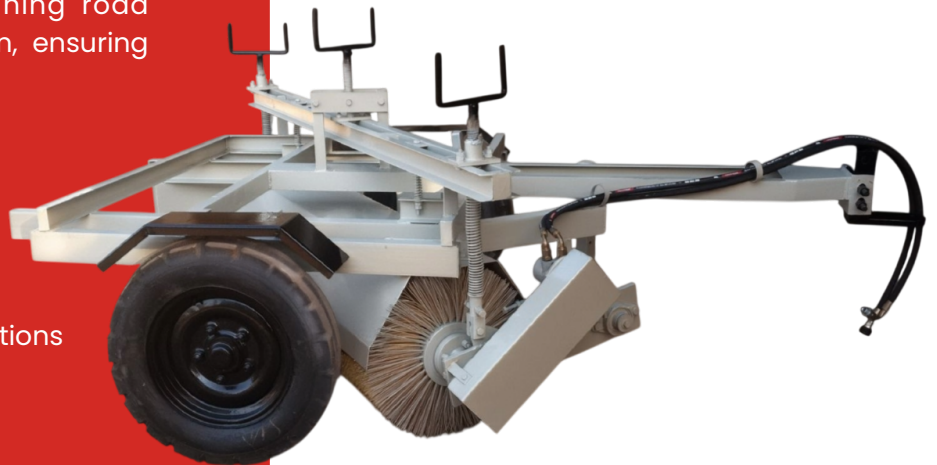
SPECIAL FEATURES:

- Air Brake for Effective braking.
- Hydraulically driven vibrating screed.
- Special design of chassis for more strength & stability.
- Two No. Of Burner are Provided with kerosene Tank for heating of Screed.
- High operating Speed with Low noise level.

The Road Broomer is used for cleaning road surfaces before and after construction, ensuring proper bonding and a clean finish.

KEY HIGHLIGHTS:

- Effective dust and debris removal
- Adjustable brush height and angle
- Hydraulic or mechanical operation options
- Suitable for various road conditions
- Low maintenance and easy operation



■ BROOMER

■ BITUMEN DRUM DECANter



The Bitumen Drum Decanter is designed to efficiently extract bitumen from drums and make it ready for use in road construction.

SPECIAL FEATURES:

- Fast and efficient bitumen heating and extraction
- Uniform heating system for better performance
- Safe and easy drum loading system
- Energy-efficient operation
- Robust and reliable design

BITUMAN SPRAYER

■ BITUMEN PRESSURE DISTRIBUTOR

The Bitumen Pressure Distributor is designed for accurate and consistent spraying of hot bitumen for prime coat and tack coat applications.

KEY HIGHLIGHTS:

- Uniform spraying with precise pressure control
- Fully insulated tank for efficient heat retention
- Advanced spray bar system for even distribution
- Available in manual and automatic operation
- Suitable for large-scale road construction projects

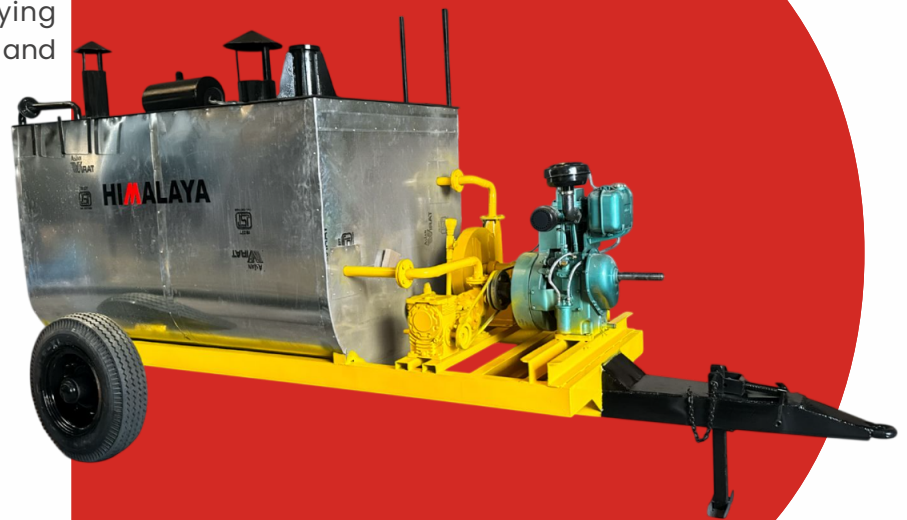


■ BITUMEN TROLLEY SPRAYER (BOILER)

The Emulsion Sprayer is used for spraying bitumen emulsion, ideal for maintenance and low-temperature applications.

KEY HIGHLIGHTS:

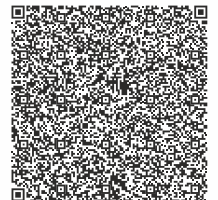
- Uniform and controlled emulsion spraying
- No need for high-temperature heating
- Ideal for repair and maintenance works
- Energy-efficient and easy to operate
- Compact and cost-effective design



Visit Our Website



Scan for Address



GET IN TOUCH!

+91 98250 22874 (Sales)
+91 99090 22874 (Design & Tech Service)
+91 99090 22875 (Production)

02762 - 224220

sales@himalayaengineering.com

www.himalayaengineering.com

Plot No. 38, G.I.D.C. Phase-2, Dediyan, Mehsana - 384002, Gujarat, India.

Follow us on:

